

OFFICE FOR SUBLEASE

Pacific Corporate Center

6650 SW Redwood Lane, Suite 380, Portland, OR 97224
Building 16



Key Features



1,855 sq. ft. office

Modern finishes

Access to building
conference room

Attractive landscaping with
walking paths

Immediate access to I-5

Walkable environment
offering a variety of amenities
including rotating food trucks
(seasonal), Starbucks and
Gold's Gym

Master lease through
12/31/2027

Lease Rate:
\$38.00/sq. ft./yr.
full service

Jake Bigby
jakeb@pactrust.com

Caitlin Knecht
caitlink@pactrust.com

503.624.6300

Owned & Managed by

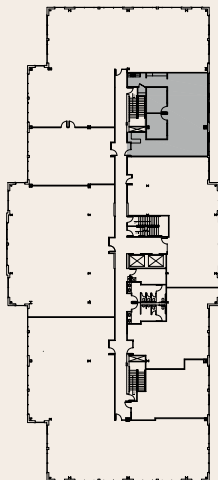
PACTRUST

© 2025 PacTrust. All information supplied herein, including but not limited to measurements, dimensions, and specifications, is deemed reliable but is not guaranteed and should be independently verified. Any reliance on the information contained herein is at the user's own risk.

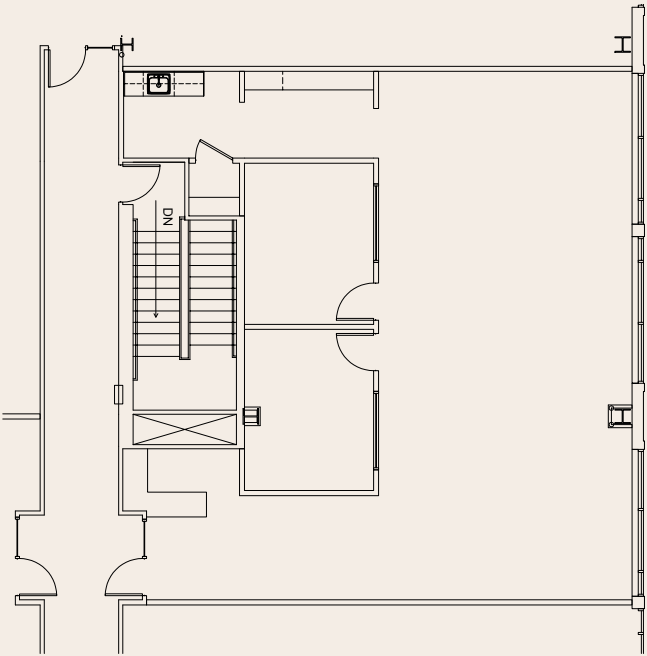
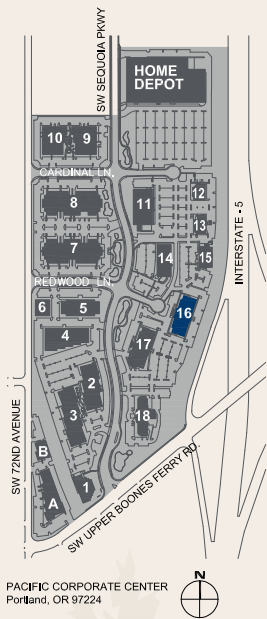
Space Plan

6650 SW Redwood Lane, Suite 380, Portland, OR 97224

1,855 Sq. Ft.



BUILDING PLAN



Jake Bigby
jakeb@pactrust.com

Caitlin Knecht
caitlink@pactrust.com

503.624.6300
www.PacTrust.com